

I HERBY CERTIFY THAT THIS SURVEY, PLAN, OR REPORT WAS PREPARED BY ME OR UNDER MY DIRECT SUPERVISION, THAT THE UNITED STATES PUBLIC LAND SURVEY MONUMENT RECORD IS CORRECT AND COMPLETE TO THE BEST OF MY KNOWLEDGE AND BELIEF, AND THAT I AM A DULY LICENSED LAND SURVEYOR UNDER THE LAWS OF THE STATE OF MINNESOTA.

Jacob R. Cunningham 1-8-18
SIGNATURE

JACOB R. CUNNINGHAM
MN LICENSE NO. 49547

STATE OF MINNESOTA, } ss.
COUNTY OF MURRAY, }

I hereby certify that the within Instrument was filed in this office for record on the 11TH day of JANUARY A.D. 20 18 at 9:00 o'clock A. M, and was duly recorded as Document No. _____

Evelyn C. Larson
County Recorder

CERTIFICATE OF LOCATION OF GOVERNMENT CORNER

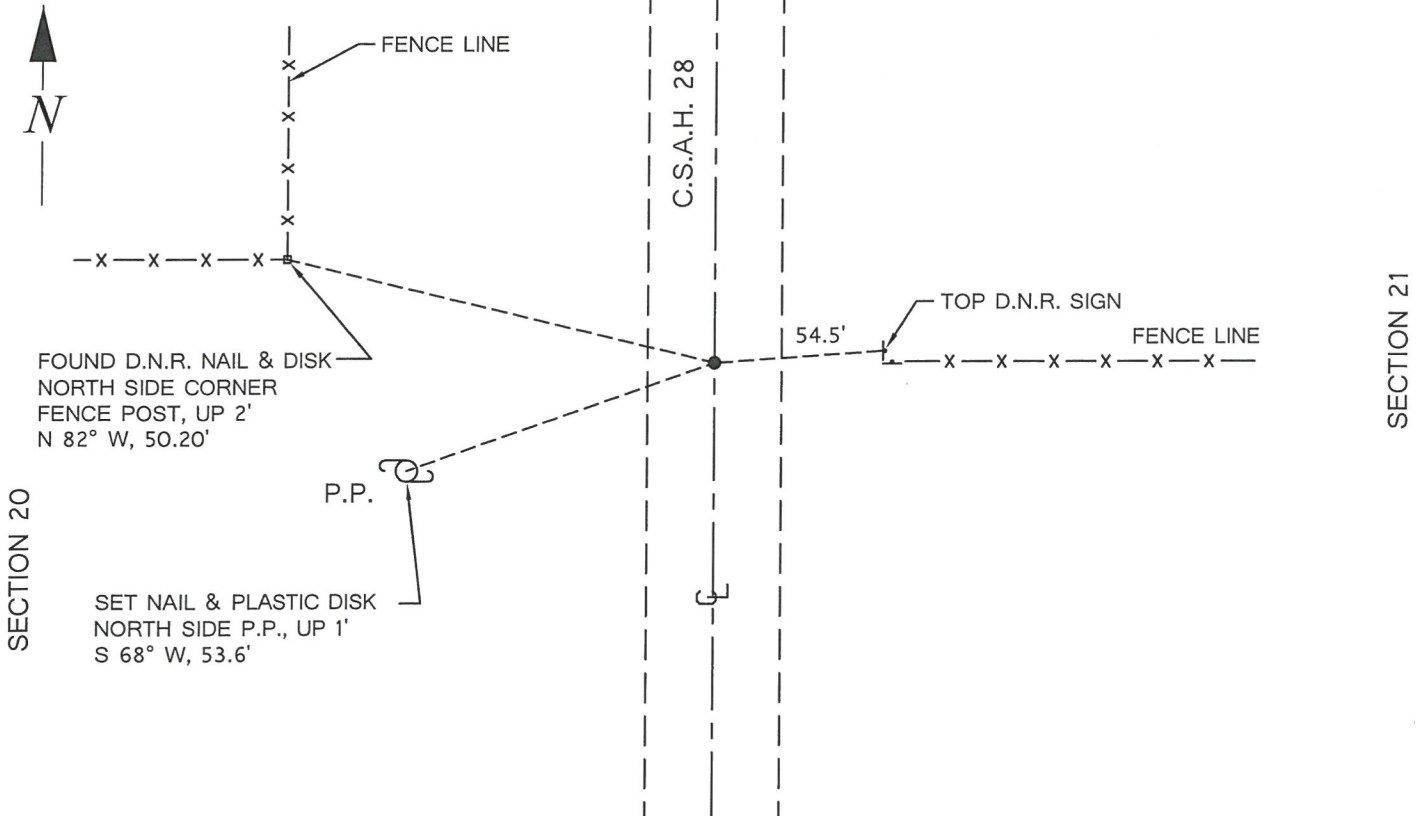
EAST QUARTER CORNER OF SECTION 20, TOWNSHIP 106N RANGE 42W, 5TH P.M.

STATE OF MINNESOTA, COUNTY OF MURRAY

AT THE CORNER LOCATION SHOWN ON THE SKETCH:

- ON 7-12-2017 FOUND A(N) 1 1/2" STAMPED DNR ALUM. CAP ON 1 1/4" STEEL TUBE, DWN. 0.8'
DATE
- LEFT MONUMENT AS FOUND, LOWERED MONUMENT, REMOVED MONUMENT (EXPLAIN)
- ON _____ PLACED A(N) _____
DATE

SKETCH OF REFERENCE TIES



NAD 83 (2011 ADJ.) MURRAY COUNTY COORDINATES

N= 145081.959 E= 463918.259 (COORDINATES ARE SHOWN AS INFORMATION ONLY, SUBJECT TO VERIFICATION.)

EAST QUARTER CORNER OF SECTION 20, TOWNSHIP 106 NORTH,
RANGE 42 WEST OF THE 5TH PRINCIPAL MERIDIAN

- 1866 The U.S. Deputy Surveyor, J.W. Bishop, set a post in mound for the original corner.
- 1912 J.W. Woolstencraft, dated November 10, 1912, completed a survey of Section 20. The survey shows a 10"X12"X20" stone in the road. The survey shows 2640 feet to adjoining section corners. The survey record is found at the Murray County Recorder's Office, Surveyor's Record Book A, on Page 228.
- 1983 DNR Survey Crew found a 3/4"X8" rebar down 0.2 feet over a 10"X12"x20" field stone down 24" at natural ground. Left stone as found and set the rebar on north side of stone. Set 1 1/2" aluminum cap stamped "D.N.R. SURVEY MARKER", on a 1 1/4" X 1 1/4"X20" perforated steel tube, over the stone, down 0.4 inches. Stone measures:
2639.00 feet to the southeast corner Section 20
2637.65 feet to the northeast corner Section 20
- 2017 In July, Great River Energy Survey Crew found a 1 1/2" aluminum cap stamped "D.N.R. SURVEY MARKER", over a steel tube, down 0.8 feet, along with the ties shown of the front of this certificate. The found monument is accepted as marking the location of this Public Land Survey Corner.

Measured distances to other corners are as follows:

NE CORNER SEC. 20, N 00d 08' 20" E, 2637.65
SE CORNER SEC. 20, S 00d 04' 11" W, 2639.00